

色谱柱: SinoChrom ODS-BP (4.6*250mm, 5 μm)

流动相: A-0.1%磷酸水, B-乙腈

0min 98%A+2%B

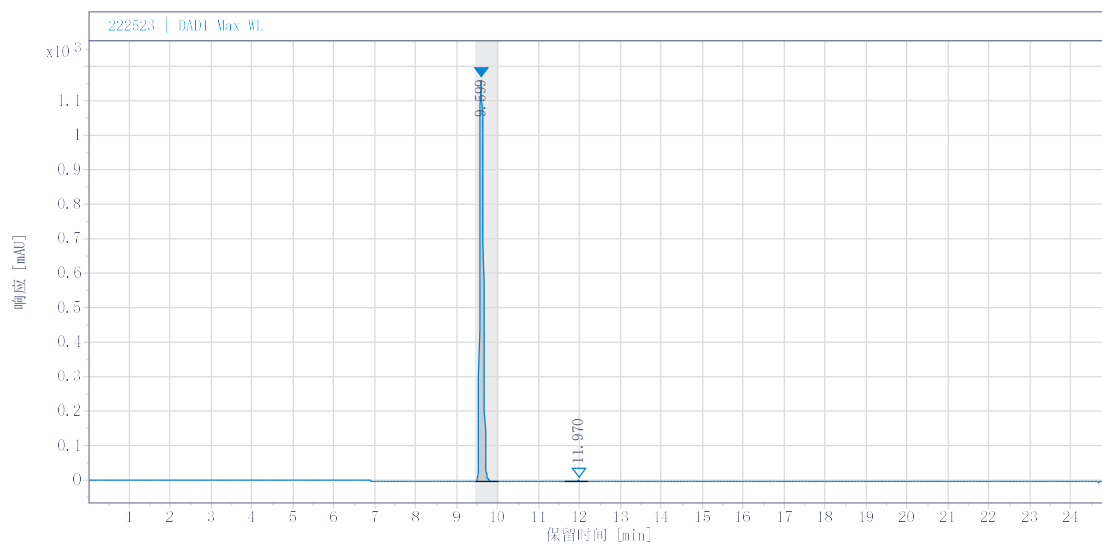
25min 5%A+95%B

流速:1.0 ml/min

柱温: 30℃

检测器: DAD 312nm

溶剂: 50%乙腈水



#	RT (min)	峰面积	峰面积 %	峰高
1	9.599	7246.798	99.642	1165.549
2	11.970	26.065	0.358	2.157

